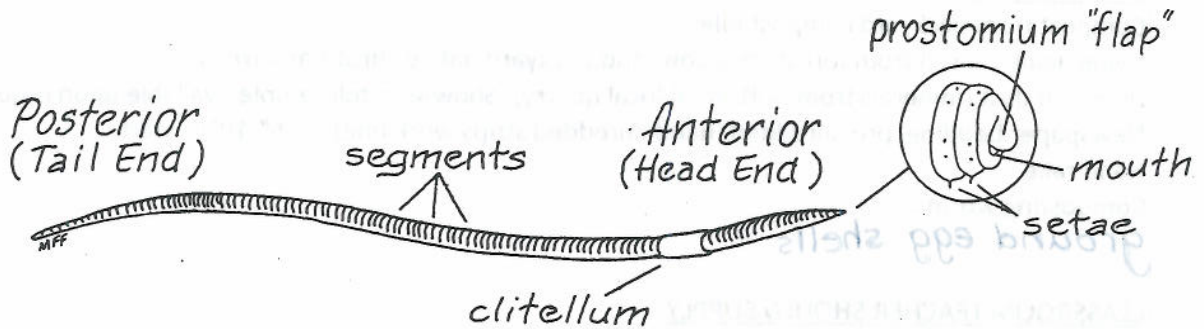


**Wormformation**

The shape of a worm is long and thin. It has a soft body and it has no bones beneath its skin. The body of a worm is made of many little rings with grooves between them. Each of these rings is called a segment. Each segment has bristles called setae that help the worm move. A worm has no arms, legs, or eyes.

**Directions**

Read the *Wormformation* and look at the earthworm diagram to answer the questions. (Hint: Use the glossary for extra help.)

1. What is the basic shape of a worm? \_\_\_\_\_
2. Does a worm have arms or legs? \_\_\_\_\_
3. Does a worm have a mouth? \_\_\_\_\_
4. The prostomium is a flap above the worm's \_\_\_\_\_
5. Does a worm have eyes? \_\_\_\_\_
6. What is the head end of a worm called? \_\_\_\_\_
7. What is the tail end of a worm called? \_\_\_\_\_
8. What is the name of the swollen band? \_\_\_\_\_
9. What are the rings on a worm's body called? \_\_\_\_\_
10. The bristles that aid in a worm's movement are called \_\_\_\_\_

**Bonus Activity** Look at a real worm. Identify its parts.